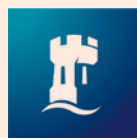




Refugee Education UK

# Education in Nottingham

—  
[reuk.org](http://reuk.org)



University of  
**Nottingham**

Institute for Policy and Engagement

Created by Refugee Education UK  
in partnership with the University of Nottingham

# Welcome to Nottingham!

The charity Refugee Education UK and Professor Joanna McIntyre from the University of Nottingham want to extend a very warm welcome to you. We have produced this welcome booklet to tell you a little bit about the education system in England, and about some of the education activities for young people aged 14–21 in Nottingham.



The team at REUK

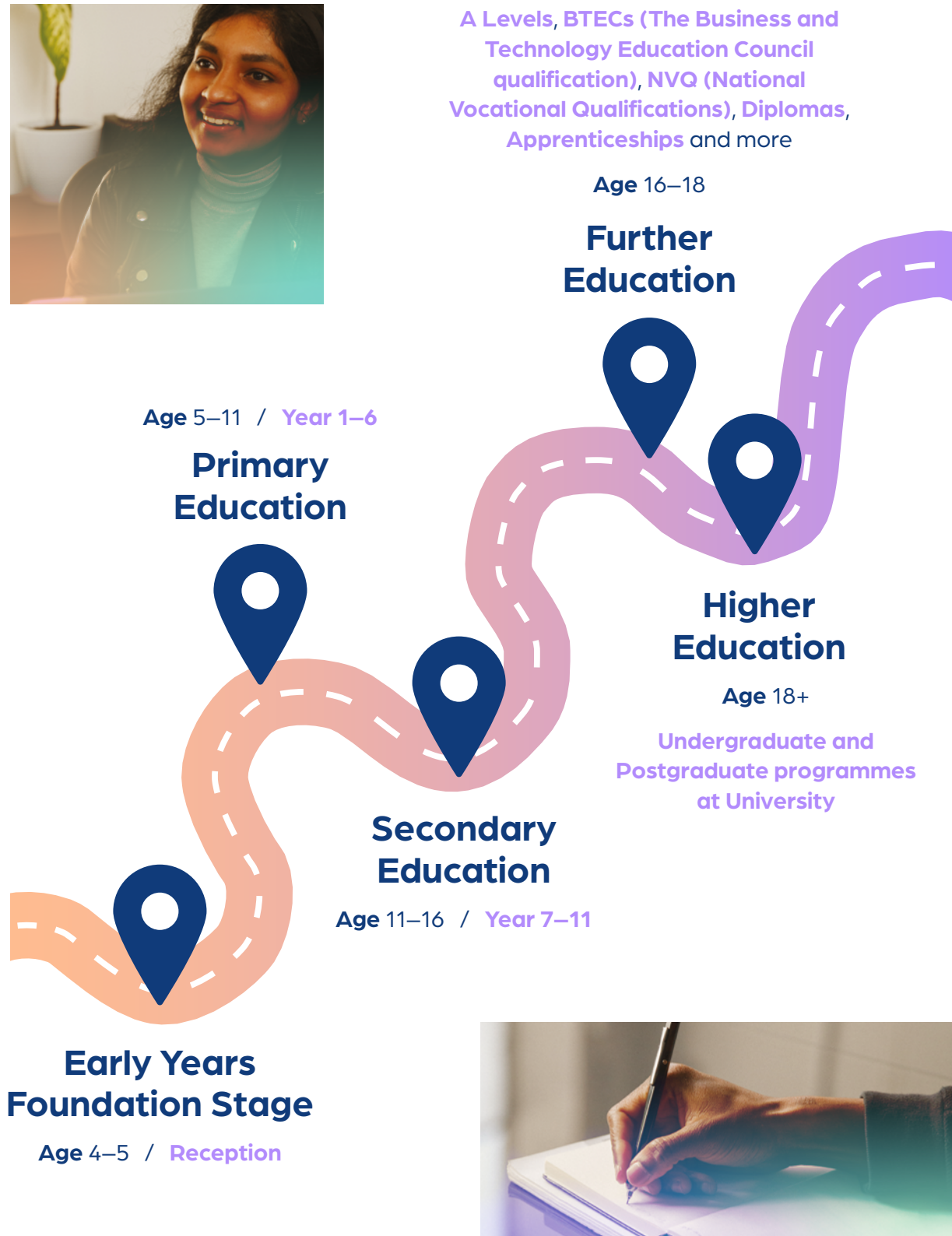


Professor Joanna McIntyre,  
University of Nottingham

- On **page 2**, you will find an image showing you the education system in England.
- On **page 3**, you will find a bit more information about your new city, some of the places that can help start your education journey, and a variety of opportunities to learn and make new friends.
- We hope you find this booklet helpful! If you, or your parent/carer/support worker, have any questions about starting education now you are in your new city, you can email [advice@reuk.org](mailto:advice@reuk.org), where someone from Refugee Education UK will respond with some guidance.

# Education system in the UK

The education system in England is probably different to what you are used to. Here's an image showing you what it looks like:



# A little note on Nottingham

## Nottingham

Nottingham is a vibrant and energetic city that has top-class universities, museums and spaces to access art and culture. The city welcomes all refugees and asylum-seekers, and is grateful for the ways in which your contributions will make it better.

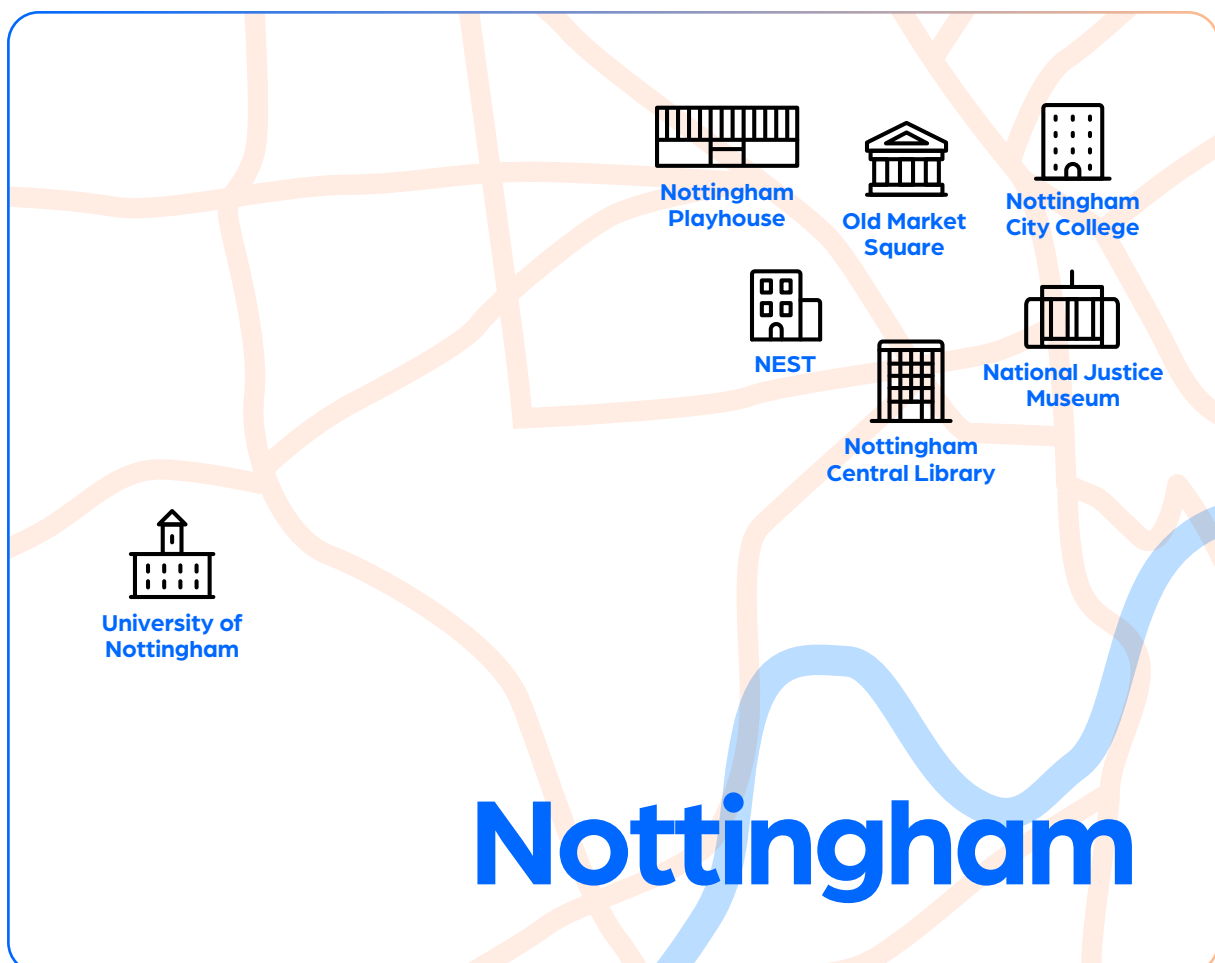
Starting life in a new city can feel overwhelming and it is often hard to know where you can go to find information about things you would like to do. Nottingham City Council has appointed a New Arrivals Coordinator who works with asylum-seekers and refugee families in the city of Nottingham. This includes supporting families to access

the services, benefits and guidance they need to settle into Nottingham, including support with accessing education. The new arrivals coordinator can be contacted by:

**Email:** [community.cohesion@nottinghamcity.gov.uk](mailto:community.cohesion@nottinghamcity.gov.uk)

**Phone:** 0115 876 4691

Nottingham County Council has created a directory of schools, community organisations, healthcare centres and other helpful information as you settle into the city, which can be found at: [bit.ly/welcometonottingham](https://bit.ly/welcometonottingham)





We have also created this list of educational activities for young people that we hope you find helpful. Timings and venues of provisions may change, so please contact the provision directly before visiting.

## Colleges

### Nottingham Education Sanctuary Team (NEST)

NEST provides education specifically for newly arrived refugees and asylum-seeking young people.

**Age group:**

15–19

**Website:**

[www.nest.schooljotter2.com](http://www.nest.schooljotter2.com)

**Email:**

[admin@hhe.nottingham.sch.uk](mailto:admin@hhe.nottingham.sch.uk)

### Catch 22

Catch22 is an alternative and special education provider, delivering full-time and part-time provision in primary, secondary and College settings for young people with barriers to education.

**Age group:**

5 and above

**Website:**

[www.catch-22.org.uk](http://www.catch-22.org.uk)

**Email:**

[info@catch-22.org.uk](mailto:info@catch-22.org.uk)

### Nottingham College

Nottingham College offers a comprehensive range of further and higher education courses and training opportunities for business and industry accessible to refugee students.

**Age group:**

14 and above

**Website:**

[www.nottinghamcollege.ac.uk](http://www.nottinghamcollege.ac.uk)

**Email:**

[enquiries@nottinghamcollege.ac.uk](mailto:enquiries@nottinghamcollege.ac.uk)

## Language Learning Classes

### Basic Educational Guidance in Nottinghamshire (BEGIN)

BEGIN provides advice to asylum-seekers and refugees on ESOL, Functional Skills Math and English in Nottinghamshire.

**Age group:**

16 and above

**Website:**

[www.begin.org.uk](http://www.begin.org.uk)

**Email:**

[enquiries@begin.org.uk](mailto:enquiries@begin.org.uk)

### Refugee Forum

Refugee Forum offers English language classes, and a range of other services including healthcare access support, letter comprehension assistance, practical aid for destitute asylum seekers, LGBTQI+ advice, integration training, employment support, interpreting, and volunteering opportunities. They also run a youth club for 13–21 year olds. You can read more about it at: [bit.ly/nrf-youthproject](https://bit.ly/nrf-youthproject)

**Age group:**

13–21

**Website:**

[www.nottsrefugeeforum.org.uk/english-esol-classes](http://www.nottsrefugeeforum.org.uk/english-esol-classes)

**Email:**

[info@nottsrefugeeforum.org.uk](mailto:info@nottsrefugeeforum.org.uk)

## British Red Cross

The British Red Cross has a Wednesday Afternoon Project that includes English classes, music, games, and food. These classes are free to attend and no booking is required.

**Age group:**

18 and above

**Website:**

[nottinghamrefugeeweek.org/2023/events/red-cross-wednesday-afternoon-project](https://nottinghamrefugeeweek.org/2023/events/red-cross-wednesday-afternoon-project)

**Email:**

[samanthalee@redcross.org.uk](mailto:samanthalee@redcross.org.uk)

## Belong Nottingham

Belong offers a range of ESOL classes from Pre Entry to Entry 3. They run groups for women only and evening classes for those who can't attend during the day, covering all four skills areas; speaking, listening, reading and writing.

**Age group:**

All ages

**Website:**

[www.belongnottingham.co.uk](http://www.belongnottingham.co.uk)

**Email:**

[enquiries@belongnottingham.co.uk](mailto:enquiries@belongnottingham.co.uk)

## Refugee Roots

Refugee Roots has Access English classes. These conversation classes are held at different libraries and ESOL classes.

**Age group:**

All ages

**Website:**

[www.refugeeroots.org.uk](http://www.refugeeroots.org.uk)

**Email:**

[info@refugeeroots.org.uk](mailto:info@refugeeroots.org.uk)

## Inspire Learning Nottinghamshire

Boost your skills, CV, and job prospects with Inspire's Functional Skills courses in English. Their ESOL (English for Speakers of Other Languages) courses are for anyone whose first language is not English to develop reading, writing, speaking, and listening skills.

**Age group:**

All ages

**Website:**

[www.inspireculture.org.uk/skills-learning/english-esol-courses](http://www.inspireculture.org.uk/skills-learning/english-esol-courses)

**Email:**

[ask@inspireculture.org.uk](mailto:ask@inspireculture.org.uk)

## St Nic's Church

St Nic's Church runs free weekly English classes in the church building which are open to anyone.

**Age group:**

All ages

**Website:**

[stnics.org](http://stnics.org)

**Email:**

[office@stnics.org](mailto:office@stnics.org)

## Nottingham Playhouse

Nottingham Playhouse has a Conversation Cafe for refugee and asylum-seekers, who want to practise their English language skills in a relaxed and comfortable setting using creative topic discussions and games.

**Age group:**

14 and above

**Website:**

[nottinghamplayhouse.co.uk/project/the-conversation-cafe](http://nottinghamplayhouse.co.uk/project/the-conversation-cafe)

**Email:**

[enquiry@nottinghamplayhouse.co.uk](mailto:enquiry@nottinghamplayhouse.co.uk)

## Inspire Culture Learning & Libraries– FREE Library membership for refugees and asylum-seekers

If you are a refugee in Nottinghamshire, you can join a library for free – this includes borrowing any of the e-books available and accessing the library computers for free!

**Age group:**

All ages

**Website:**

[www.inspireculture.org.uk/reading-information/support-for-refugees](http://www.inspireculture.org.uk/reading-information/support-for-refugees)

**Email:**

[ask@inspireculture.org.uk](mailto:ask@inspireculture.org.uk)



## Community activities

(sports, games, youth clubs and art sessions)

## Nottingham Forest Community Trust – football sessions for refugees and asylum seekers

These football sessions are designed for refugees and asylum seekers, providing a secure and welcoming environment

**Age group:**

16 and above

**Email:**

[stefan.furgala@nottinghamforest.co.uk](mailto:stefan.furgala@nottinghamforest.co.uk)

## Base 51 Youth Club

Join the Base 51 youth club for exciting activities, a chance to make new friends, and more importantly, HAVE FUN!

**Age group:**

11–25

**Website:**

[www.base51.org](http://www.base51.org)

**Email:**

[info@base51.org.uk](mailto:info@base51.org.uk)

## Pythian Club

You can take part in a variety of sports like football, boxing, and basketball. You can also try your hand at knitting and crafting or join their range of nature and gardening activities.

**Age group:**

all ages (under 18s to be accompanied by a responsible adult)

**Website:**

[www.thepythianclub.co.uk](http://www.thepythianclub.co.uk)

**Email:**

[support@thepythianclub.co.uk](mailto:support@thepythianclub.co.uk)



## Art and crafts

### Access Art sessions

These sessions allow people to channel their feelings into their work, or simply have fun while making conversation with those around them.

**Age group:**

All ages

**Website:**

[www.refugeeroots.org.uk/news/art](http://www.refugeeroots.org.uk/news/art)

**Email:**

[enquiry@nottinghamplayhouse.co.uk](mailto:enquiry@nottinghamplayhouse.co.uk)

### Pythian Club

They offer a range of nature and gardening activities, or you can try knitting and crafting.

**Age group:**

all ages (under 18s to be accompanied by a responsible adult)

**Website:**

[www.thepythianclub.co.uk](http://www.thepythianclub.co.uk)

**Email:**

[support@thepythianclub.co.uk](mailto:support@thepythianclub.co.uk)

## Mentoring and mental health support

### BASE 51

Base 51 is a charity in Nottingham and Nottinghamshire, providing counselling, mental health services, trauma support, and programs to help young people develop life skills, healthy relationships, and resilience for adulthood.

**Age group:**

11–25

**Website:**

[www.base51.org](http://www.base51.org)

**Email:**

[info@base51.org.uk](mailto:info@base51.org.uk)

### NottAlone

NottAlone is a dedicated website providing information and support for young people's mental health across Nottingham City and Nottinghamshire County. If you are aged under 25, are a parent or carer, or a professional who works with and supports young people, you can find information, advice and where to go to get help in Nottinghamshire.

**Age group:**

0–25

**Website:**

[www.nottalone.org.uk](http://www.nottalone.org.uk)





## Other opportunities

### Karimia Institute

This charity offers a range of educational services aimed at serving both the Muslim community and the wider society. It provides initiatives such as Quran schools, interfaith activities, and youth projects.

**Age group:**

5–16

**Website:**

[www.karimia.com](http://www.karimia.com)

**Email:**

[office@karimia.com](mailto:office@karimia.com)

### Nottingham Trent University (NTU) Navigate

Navigate is an outreach programme developed in collaboration with local refugee and asylum seeking organisations. It includes: tailored application support, monthly sessions providing English language support and extracurricular opportunities, an annual summer school, mentoring by staff and students.

**Age group:**

16–17

**Website:**

[www.ntu.ac.uk/about-us/the-centre-for-student-and-community-engagement/community-organisations/navigate](http://www.ntu.ac.uk/about-us/the-centre-for-student-and-community-engagement/community-organisations/navigate)

**Email:**

[lucy.judd@ntu.ac.uk](mailto:lucy.judd@ntu.ac.uk)



## Further Resources

You can find bus routes and timetables for Nottingham at:

[bit.ly/nottingham-transport](https://bit.ly/nottingham-transport)

You can find a list of parks in the city at:

[bit.ly/nottingham-parks](https://bit.ly/nottingham-parks)

AskLiON and Nottingham Playhouse have compiled a list of things to do in the city for newly arrived refugees and asylum-seekers at: [bit.ly/nottingham-thingstodo](https://bit.ly/nottingham-thingstodo)

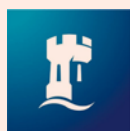
Further resources are available on the Nottingham City of Sanctuary website: [nottingham.cityofsanctuary.org](http://nottingham.cityofsanctuary.org)



You can learn more  
about the **support**  
**REUK provides here**



To access a **digital**  
**copy** of this document,  
scan this QR code



University of  
**Nottingham**  
Institute for Policy and Engagement

This project was funded by the Institute for Policy and Engagement